



BSS 2RS

Ball Bearings in Stainless Steel

The BSS 2RS bearings are made of hardened stainless steel for all the rotational parts and AISI 304 for the protection and the cage. The construction in tempered stainless steel provides excellent results in applications mildly aggressive and is not recommended for use in the presence of acids, salts, sea water, etc. The BSS 2RS bearings are successful in many applications especially in the presence of weather conditions, making them an excellent solution for the realisation of sliding glass doors for outside. The presence of 2RS protection and suitable grease allows the direct use in applications without additional protection.

Technical characteristics:

Material tempered stainless steel
Standard Radial Clearance
Stainless Steel sheets type 2RS
Grease: The bearings are supplied greased

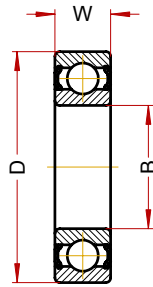
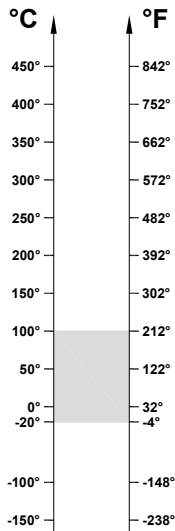
Fields of application:

Air conveyors for food processing plants
Construction industry, windows, sliding windows, etc



BSS 2RS (Micro Serie)

Ball Bearings in Stainless Steel



OPERATING RANGE: -20° / 100°C

ECONOMIC OPERATING RANGE: -20° / 100°C

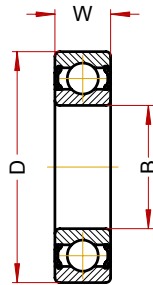
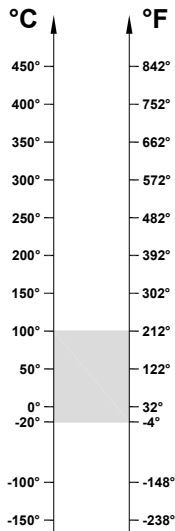
Designation	Bore (B)	Diam (D)	Widht (W)	Weight g	Speed RPM/min (*)	Static Load, kN at 100°	Static Load, kN at 20°
613/3 BSS 2RS	3	8	3	1.5	25600	0,12	0,12
623 BSS 2RS	3	10	4	3	25600	0,18	0,18
604 BSS 2RS	4	12	4	3	24320	0,34	0,34
624 BSS 2RS	4	13	5	3	24320	0,34	0,34
605 BSS 2RS	5	14	5	4	23040	0,42	0,42
625 BSS 2RS	5	16	5	5	23040	0,42	0,42
606 BSS 2RS	6	17	6	7	20480	0,85	0,85
626 BSS 2RS	6	19	6	8	20480	0,85	0,85
607 BSS 2RS	7	19	6	8	20480	0,85	0,85
627 BSS 2RS	7	22	7	13	19200	1,10	1,10
608 BSS 2RS	8	22	7	13	19200	1,10	1,10
628 BSS 2RS	8	24	8	14	19200	1,10	1,10
609 BSS 2RS	9	24	7	15	19200	1,30	1,30
629 BSS 2RS	9	26	8	20	19200	1,57	1,57

OPERATING RANGE is the correct technical range in which can be used the bearing with good operating result.

ECONOMIC OPERATING RANGE is the range of temperature in which you can find, according to our study experience and know-how, the better relation price - quality life-time.

BSS 2RS (61800 Serie)

Ball Bearings in Stainless Steel



OPERATING RANGE: -20° / 100°C

ECONOMIC OPERATING RANGE: -20° / 100°C

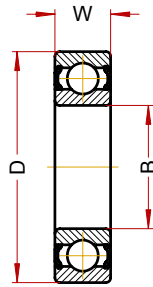
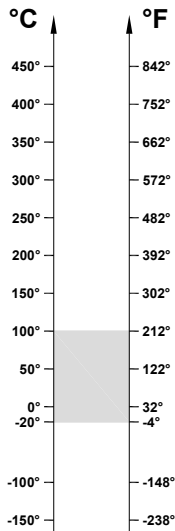
Designation	Bore (B)	Diam (D)	Widht (W)	Weight g	Speed RPM/min (*)	Static Load, kN at 100°	Static Load, kN at 20°
61800 BSS 2RS	10	19	5	5.6	21760	0,42	0,42
61801 BSS 2RS	12	21	5	6.5	20480	0,76	0,76
61802 BSS 2RS	15	24	5	7.6	19200	1	1
61803 BSS 2RS	17	26	5	8.2	17920	1,16	1,16
61804 BSS 2RS	20	32	7	18	14080	1,79	1,79
61805 BSS 2RS	25	37	7	24	12160	2,24	2,24
61806 BSS 2RS	30	42	7	27	10240	2,68	2,68
61807 BSS 2RS	35	47	7	32	8960	2,88	2,88
61808 BSS 2RS	40	52	7	35	8320	3,40	3,40
61809 BSS 2RS	45	58	7	42	7040	4,48	4,48
61810 BSS 2RS	50	65	7	52	6400	5,04	5,04
61811 BSS 2RS	55	72	9	81	5760	6,80	6,80
61812 BSS 2RS	60	78	10	105	5440	8,80	8,80
61813 BSS 2RS	65	85	10	124	4800	9,60	9,60
61814 BSS 2RS	70	90	10	133	4480	10	10
61815 BSS 2RS	75	95	10	143	4288	10,72	10,72

OPERATING RANGE is the correct technical range in which can be used the bearing with good operating result.

ECONOMIC OPERATING RANGE is the range of temperature in which you can find, according to our study experience and know-how, the better relation price - quality life-time.

BSS 2RS (61900 Serie)

Ball Bearings in Stainless Steel



OPERATING RANGE: -20° / 100°C

ECONOMIC OPERATING RANGE: -20° / 100°C

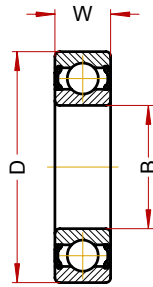
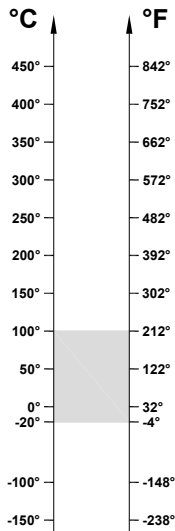
Designation	Bore (B)	Diam (D)	Widht (W)	Weight g	Speed RPM/min (*)	Static Load, kN at 100°	Static Load, kN at 20°
61900 BSS 2RS	10	22	6	10	8500	0,75	0,75
61901 BSS 2RS	12	24	6	11	8000	0,97	0,97
61902 BSS 2RS	15	28	7	16	7500	2,03	2,03
61903 BSS 2RS	17	30	7	18	7000	2,3	2,3
61904 BSS 2RS	20	37	9	38	6000	3,6	3,6
61905 BSS 2RS	25	37	7	22	5000	4	4
61906 BSS 2RS	30	47	9	51	4250	4,52	4,52
61907 BSS 2RS	35	55	10	80	3750	6,2	6,2
61908 BSS 2RS	40	62	12	120	3300	9,3	9,3
61909 BSS 2RS	45	68	12	140	3000	9,8	9,8
61910 BSS 2RS	50	72	12	160	2800	10,4	10,4
61911 BSS 2RS	55	80	13	190	2500	11,4	11,4
61912 BSS 2RS	60	85	13	200	2250	12	12
61913 BSS 2RS	65	90	13	220	2100	13,4	13,4
61914 BSS 2RS	70	100	16	350	2000	18,3	18,3
61915 BSS 2RS	75	105	16	370	1800	19,3	19,3

OPERATING RANGE is the correct technical range in which can be used the bearing with good operating result.

ECONOMIC OPERATING RANGE is the range of temperature in which you can find, according to our study experience and know-how, the better relation price - quality life-time.

BSS 2RS (6000 Serie)

Ball Bearings in Stainless Steel



OPERATING RANGE: -20° / 100°C

ECONOMIC OPERATING RANGE: -20° / 100°C

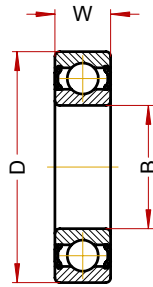
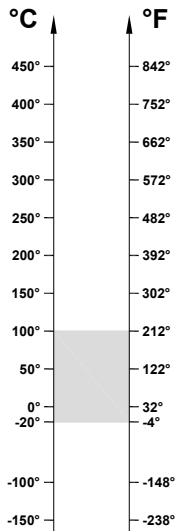
Designation	Bore (B)	Diam (D)	Widht (W)	Weight g	Speed RPM/min (*)	Static Load, kN at 100°	Static Load, kN at 20°
6000 BSS 2RS	10	26	8	20	19720	1,57	1,57
6001 BSS 2RS	12	28	8	25	16640	1,89	1,89
6002 BSS 2RS	15	32	9	30	15360	2,28	2,28
6003 BSS 2RS	17	35	10	40	14080	2,60	2,60
6004 BSS 2RS	20	42	12	69	12800	4	4
6005 BSS 2RS	25	47	12	80	10880	4,68	4,68
6006 BSS 2RS	30	55	13	120	8320	6,40	6,40
6007 BSS 2RS	35	62	14	160	7040	8,32	8,32
6008 BSS 2RS	40	68	15	190	6400	9,44	9,44
6009 BSS 2RS	45	75	16	250	5760	11,44	11,44
6010 BSS 2RS	50	80	16	260	5440	12,48	12,48
6011 BSS 2RS	55	90	18	390	4800	16,96	16,96
6012 BSS 2RS	60	95	18	420	4480	18,5	18,5
6013 BSS 2RS	65	100	18	440	4032	20	20
6014 BSS 2RS	70	110	20	600	3840	25,20	25,20
6015 BSS 2RS	75	115	20	640	3584	27,20	27,20

OPERATING RANGE is the correct technical range in which can be used the bearing with good operating result.

ECONOMIC OPERATING RANGE is the range of temperature in which you can find, according to our study experience and know-how, the better relation price - quality life-time.

BSS 2RS (6200 Serie)

Ball Bearings in Stainless Steel



OPERATING RANGE: -20° / 100°C

ECONOMIC OPERATING RANGE: -20° / 100°C

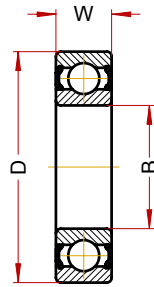
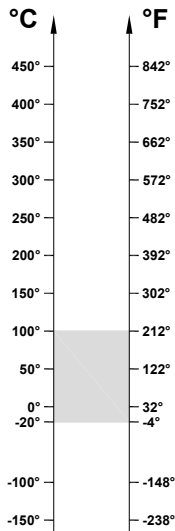
Designation	Bore (B)	Diam (D)	Widht (W)	Weight g	Speed RPM/min (*)	Static Load, kN at 100°	Static Load, kN at 20°
6200 BSS 2RS	10	30	9	30	16640	2,08	2,08
6201 BSS 2RS	12	32	10	37	15360	2,48	2,48
6202 BSS 2RS	15	35	11	45	12800	3	3
6203 BSS 2RS	17	40	12	65	11520	3,80	3,80
6204 BSS 2RS	20	47	14	110	12000	5,24	5,24
6205 BSS 2RS	25	52	15	130	8960	6,40	6,40
6206 BSS 2RS	30	62	16	200	7040	8,96	8,96
6207 BSS 2RS	35	72	17	290	6080	12,24	12,24
6208 BSS 2RS	40	80	18	370	5440	14,40	14,40
6209 BSS 2RS	45	85	19	410	5120	16,32	16,32
6210 BSS 2RS	50	90	20	460	4800	19,20	19,20
6211 BSS 2RS	55	100	21	610	4288	23,20	23,20
6212 BSS 2RS	60	110	22	780	3840	28,80	28,80
6213 BSS 2RS	65	120	23	990	3392	33,20	33,20
6214 BSS 2RS	70	125	24	1040	3200	35,20	35,20
6215 BSS 2RS	75	130	25	1210	3072	39,20	39,20

OPERATING RANGE is the correct technical range in which can be used the bearing with good operating result.

ECONOMIC OPERATING RANGE is the range of temperature in which you can find, according to our study experience and know-how, the better relation price - quality life-time.

BSS 2RS (6300 Serie)

Ball Bearings in Stainless Steel



OPERATING RANGE: -20° / 100°C

ECONOMIC OPERATING RANGE: -20° / 100°C

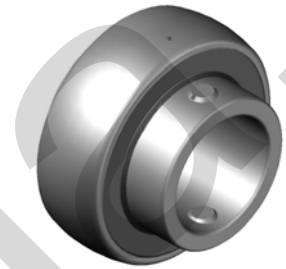
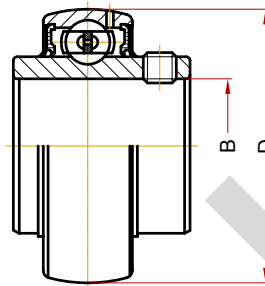
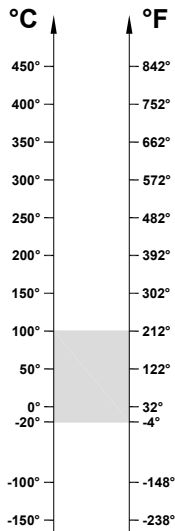
Designation	Bore (B)	Diam (D)	Widht (W)	Weight g	Speed RPM/min (*)	Static Load, kN at 100°	Static Load, kN at 20°
6300 BSS 2RS	10	35	11	52	14080	2,76	2,76
6301 BSS 2RS	12	37	12	60	12800	3,32	3,32
6302 BSS 2RS	15	42	13	80	11520	4,32	4,32
6303 BSS 2RS	17	47	14	120	10240	5,54	5,54
6304 BSS 2RS	20	52	15	140	8960	6,80	6,80
6305 BSS 2RS	25	62	17	225	7040	9,12	9,12
6306 BSS 2RS	30	72	19	350	6080	13,04	13,04
6307 BSS 2RS	35	80	21	450	5440	15,20	15,20
6308 BSS 2RS	40	90	23	620	4800	20	20
6309 BSS 2RS	45	100	25	830	4288	25,60	25,60
6310 BSS 2RS	50	110	27	1050	3840	30,40	30,40
6311 BSS 2RS	55	120	29	1350	3392	38	38
6312 BSS 2RS	60	130	31	1700	3200	41,60	41,60
6313 BSS 2RS	65	140	33	2100	2880	48	48
6314 BSS 2RS	70	150	35	2500	2752	56,2	56,2
6315 BSS 2RS	75	160	37	3000	2560	61,20	61,20

OPERATING RANGE is the correct technical range in which can be used the bearing with good operating result.

ECONOMIC OPERATING RANGE is the range of temperature in which you can find, according to our study experience and know-how, the better relation price - quality life-time.

BSS 2RS (UC Serie)

Insert Bearings in Stainless Steel



OPERATING RANGE: -20° / 100°C

ECONOMIC OPERATING RANGE: -20° / 100°C

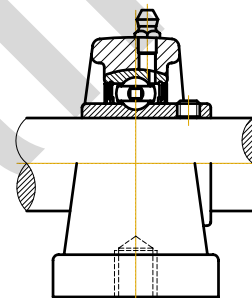
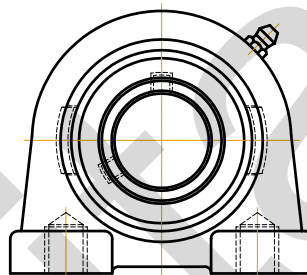
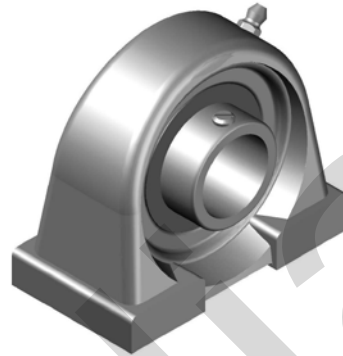
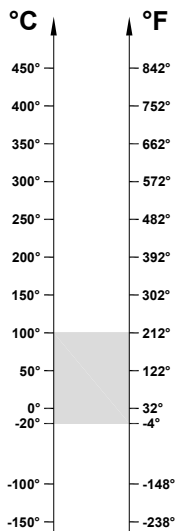
Designation	Bore (B)	Diam (D)	Speed RPM/min (*)	Static Load, kN at 100°	Static Load, kN at 20°
UC 201 BSS 2RS	12	47	1440	5,94	5,94
UC 202 BSS 2RS	15	47	1440	5,94	5,94
UC 203 BSS 2RS	17	47	1440	5,94	5,94
UC 204 BSS 2RS	20	47	1200	5,94	5,94
UC 205 BSS 2RS	25	52	1120	7	7
UC 206 BSS 2RS	30	62	880	10,1	10,1
UC 207 BSS 2RS	35	72	760	13,6	13,6
UC 208 BSS 2RS	40	80	680	16,3	16,3
UC 209 BSS 2RS	45	85	640	18,5	18,5
UC 210 BSS 2RS	50	90	600	20,8	20,8
UC 211 BSS 2RS	55	100	536	26,1	26,1
UC 212 BSS 2RS	60	110	480	29,3	29,3
UC 213 BSS 2RS	65	120	424	35,8	35,8
UC 214 BSS 2RS	70	125	400	40,2	40,2
UC 215 BSS 2RS	75	130	384	44,3	44,3

OPERATING RANGE is the correct technical range in which can be used the bearing with good operating result.

ECONOMIC OPERATING RANGE is the range of temperature in which you can find, according to our study experience and know-how, the better relation price - quality life-time.

BSS 2RS (UCPA Serie)

Pillow Block in Stainless Steel



OPERATING RANGE: -20° / 100°C

ECONOMIC OPERATING RANGE: -20° / 100°C

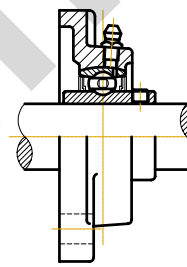
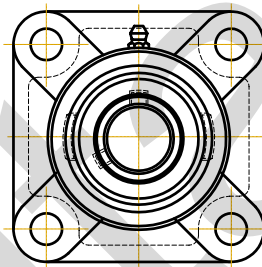
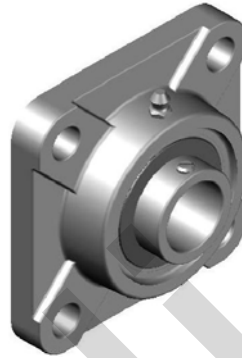
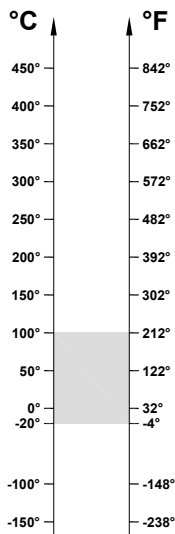
Unit code	Bearing code	Housing code
UCPA 201 BSS 2RS	UC 201 BSS 2RS	SS PA 201
UCPA 202 BSS 2RS	UC 202 BSS 2RS	SS PA 202
UCPA 203 BSS 2RS	UC 203 BSS 2RS	SS PA 203
UCPA 204 BSS 2RS	UC 204 BSS 2RS	SS PA 204
UCPA 205 BSS 2RS	UC 205 BSS 2RS	SS PA 205
UCPA 206 BSS 2RS	UC 206 BSS 2RS	SS PA 206
UCPA 207 BSS 2RS	UC 207 BSS 2RS	SS PA 207
UCPA 208 BSS 2RS	UC 208 BSS 2RS	SS PA 208
UCPA 209 BSS 2RS	UC 209 BSS 2RS	SS PA 209
UCPA 210 BSS 2RS	UC 210 BSS 2RS	SS PA 210
UCPA 211 BSS 2RS	UC 211 BSS 2RS	SS PA 211
UCPA 212 BSS 2RS	UC 212 BSS 2RS	SS PA 212
UCPA 213 BSS 2RS	UC 213 BSS 2RS	SS PA 213
UCPA 214 BSS 2RS	UC 214 BSS 2RS	SS PA 214
UCPA 215 BSS 2RS	UC 215 BSS 2RS	SS PA 215

OPERATING RANGE is the correct technical range in which can be used the bearing with good operating result.

ECONOMIC OPERATING RANGE is the range of temperature in which you can find, according to our study experience and know-how, the better relation price - quality life-time.

BSS 2RS (UCF Serie)

Pillow Block in Stainless Steel



OPERATING RANGE: -20° / 100°C

ECONOMIC OPERATING RANGE: -20° / 100°C

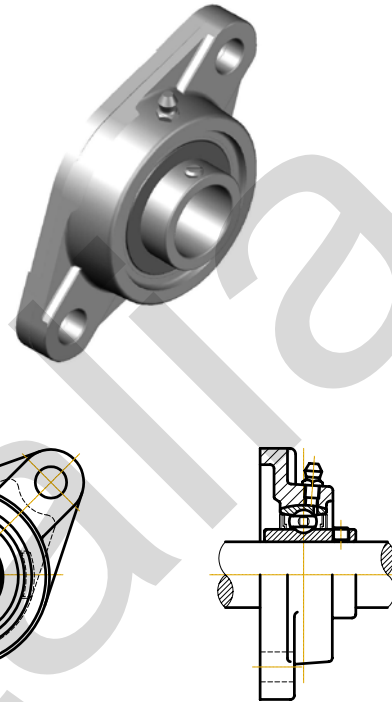
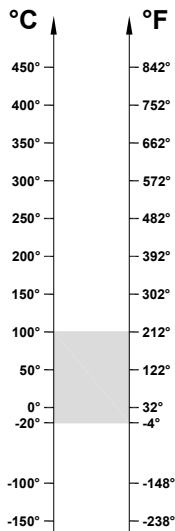
Unit code	Bearing code	Housing code
UCF 201 BSS 2RS	UC 201 BSS 2RS	SS F 201
UCF 202 BSS 2RS	UC 202 BSS 2RS	SS F 202
UCF 203 BSS 2RS	UC 203 BSS 2RS	SS F 203
UCF 204 BSS 2RS	UC 204 BSS 2RS	SS F 204
UCF 205 BSS 2RS	UC 205 BSS 2RS	SS F 205
UCF 206 BSS 2RS	UC 206 BSS 2RS	SS F 206
UCF 207 BSS 2RS	UC 207 BSS 2RS	SS F 207
UCF 208 BSS 2RS	UC 208 BSS 2RS	SS F 208
UCF 209 BSS 2RS	UC 209 BSS 2RS	SS F 209
UCF 210 BSS 2RS	UC 210 BSS 2RS	SS F 210
UCF 211 BSS 2RS	UC 211 BSS 2RS	SS F 211
UCF 212 BSS 2RS	UC 212 BSS 2RS	SS F 212
UCF 213 BSS 2RS	UC 213 BSS 2RS	SS F 213
UCF 214 BSS 2RS	UC 214 BSS 2RS	SS F 214
UCF 215 BSS 2RS	UC 215 BSS 2RS	SS F 215

OPERATING RANGE is the correct technical range in which can be used the bearing with good operating result.

ECONOMIC OPERATING RANGE is the range of temperature in which you can find, according to our study experience and know-how, the better relation price - quality life-time.

BSS 2RS (UCFL Serie)

Pillow Block in Stainless Steel



OPERATING RANGE: -20° / 100°C

ECONOMIC OPERATING RANGE: -20° / 100°C

Unit code	Bearing code	Housing code
UCFL 201 BSS 2RS	UC 201 BSS 2RS	SS FL 201
UCFL 202 BSS 2RS	UC 202 BSS 2RS	SS FL 202
UCFL 203 BSS 2RS	UC 203 BSS 2RS	SS FL 203
UCFL 204 BSS 2RS	UC 204 BSS 2RS	SS FL 204
UCFL 205 BSS 2RS	UC 205 BSS 2RS	SS FL 205
UCFL 206 BSS 2RS	UC 206 BSS 2RS	SS FL 206
UCFL 207 BSS 2RS	UC 207 BSS 2RS	SS FL 207
UCFL 208 BSS 2RS	UC 208 BSS 2RS	SS FL 208
UCFL 209 BSS 2RS	UC 209 BSS 2RS	SS FL 209
UCFL 210 BSS 2RS	UC 210 BSS 2RS	SS FL 210
UCFL 211 BSS 2RS	UC 211 BSS 2RS	SS FL 211
UCFL 212 BSS 2RS	UC 212 BSS 2RS	SS FL 212
UCFL 213 BSS 2RS	UC 213 BSS 2RS	SS FL 213
UCFL 214 BSS 2RS	UC 214 BSS 2RS	SS FL 214
UCFL 215 BSS 2RS	UC 215 BSS 2RS	SS FL 215

OPERATING RANGE is the correct technical range in which can be used the bearing with good operating result.

ECONOMIC OPERATING RANGE is the range of temperature in which you can find, according to our study experience and know-how, the better relation price - quality life-time.